

4330 S. RACINE AVENUE CHICAGO, ILLINOIS

BUILDING FEATURES

Stockyard Industrial Park

Located in an Enterprise/
Empowerment Zone/TIF District
Well Maintained Building, close to
Downtown Chicago and Expressways



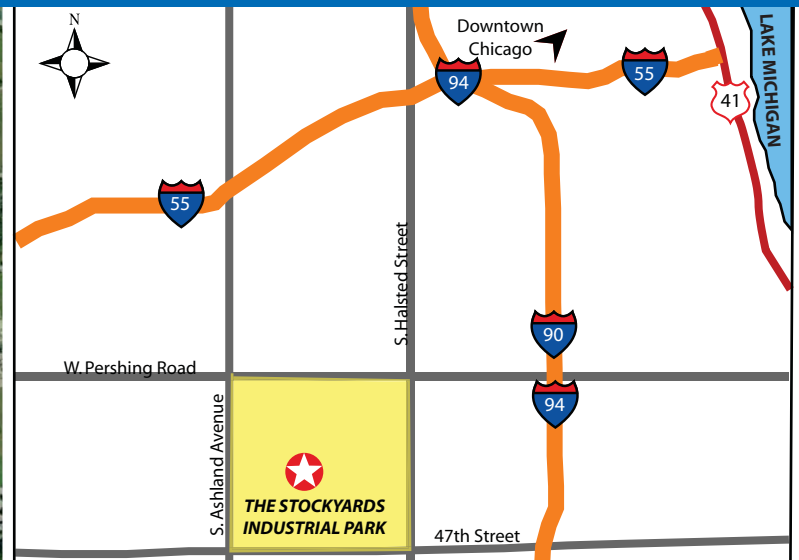
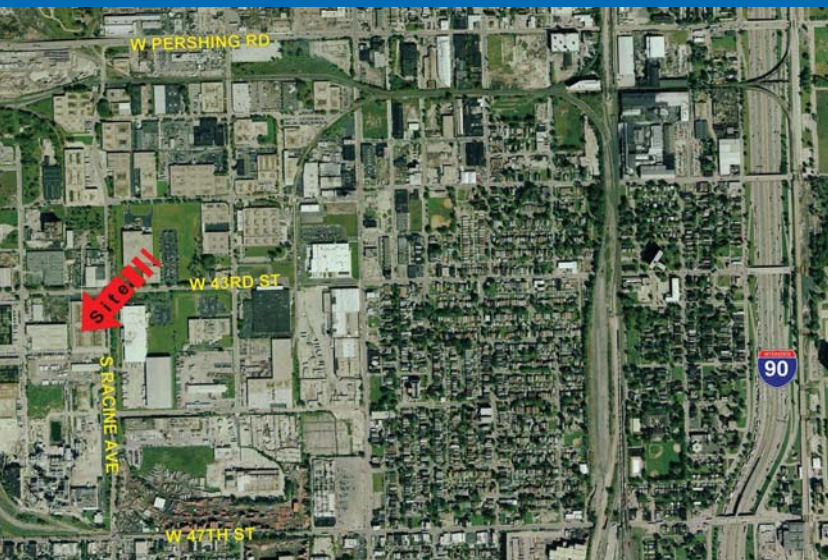
BUILDING SPECIFICATIONS

Building Size:	168,350 Sq. Ft.
Available Space:	128,000 Sq. Ft. (Divisible to 40,000 Sq. Ft.)
Land Size:	243,000 Sq. Ft. (5.58 Acres)
Office Size:	12,893 Sq. Ft. / 7,000 Sq. Ft. Available
Ceiling:	20'
Power:	Heavy
Loading:	8 Truck Docks - 4 Available (Additional To Suit)
Parking:	75 Cars (Expandable)

Visit us on the Web:

www.nelsonlistings.com

Paine/Wetzel Associates, Inc.
ONCOR International
8700 W. Bryn Mawr Avenue, #100S
Chicago, Illinois 60631
773.714.9300 - 773.714.8253 - Fax



For more Information, Contact:

Michael Nelson
(773) 714-2121
mnelson@painewetzel.com

Matt Rogatz, SIOR
(773) 254-9555
mattr@chicagoindustrialre.com